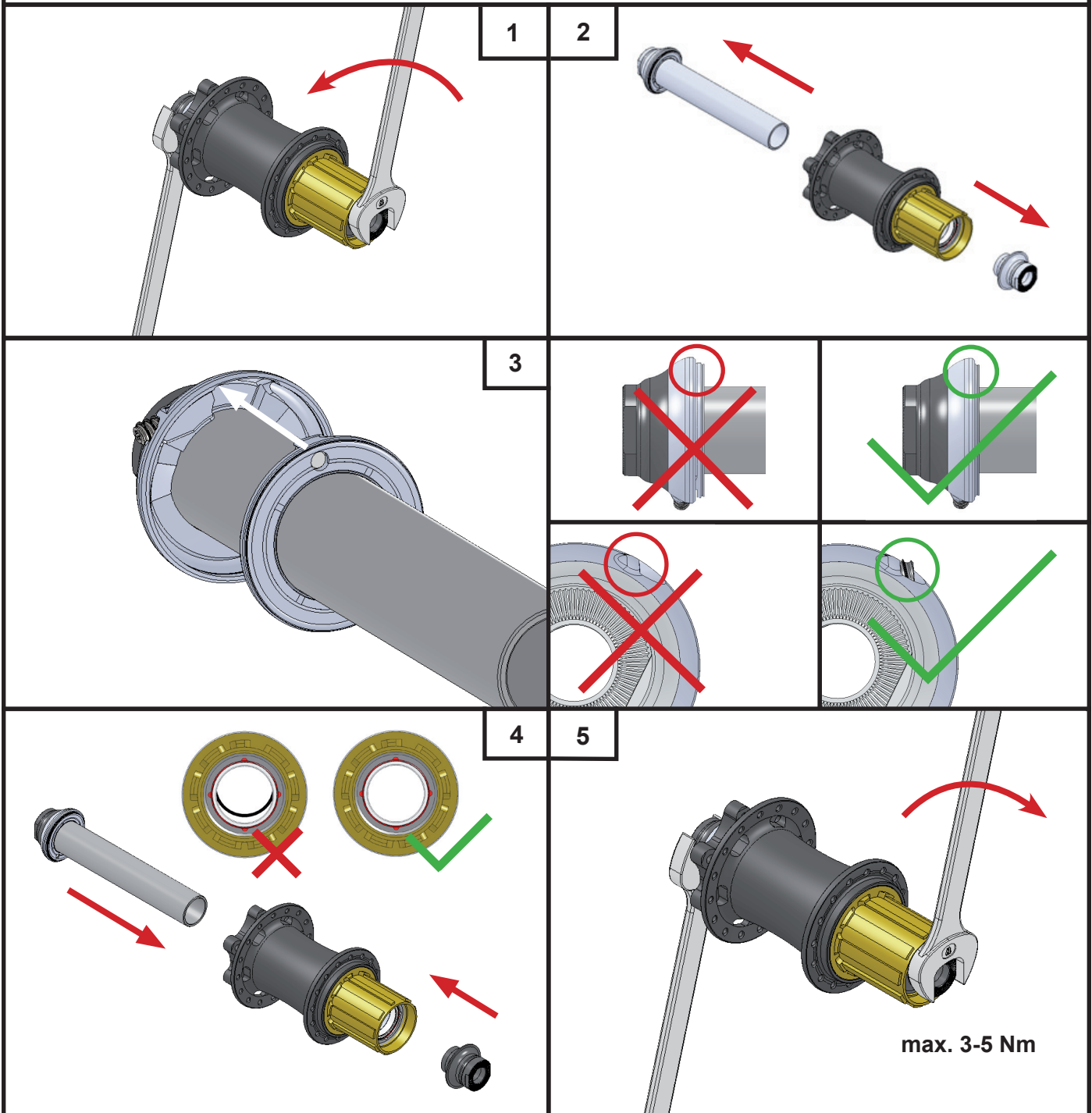


# Installation Conversion Kit



- 1) Loosen right end cap while holding up left end cap with 2 open-end wrenches with width across flats (AF) 17mm
- 2) Remove old axle with end caps and adjustment system from hub body
- 3) Mind the correct position of the pin ring into the screw ring and the visibility of the adjustment screw
- 4) Insert new axle with end cap and adjustment system into the hub body
- 5) Slightly tighten end caps with 2 open-end wrenches (max. torque 3-5 nm)